



1

**Central Module**  
446 135 ... 0



2

**Brake Signal Transmitter**  
480 001 ... 0



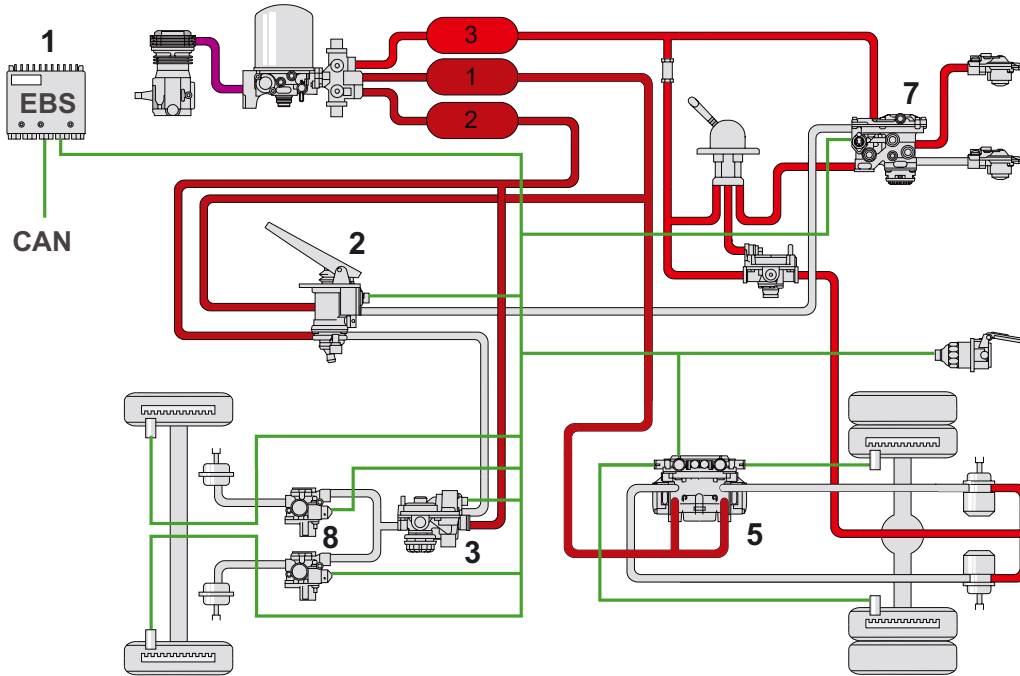
3

**Proportional relay valve**  
480 202 00 . 0

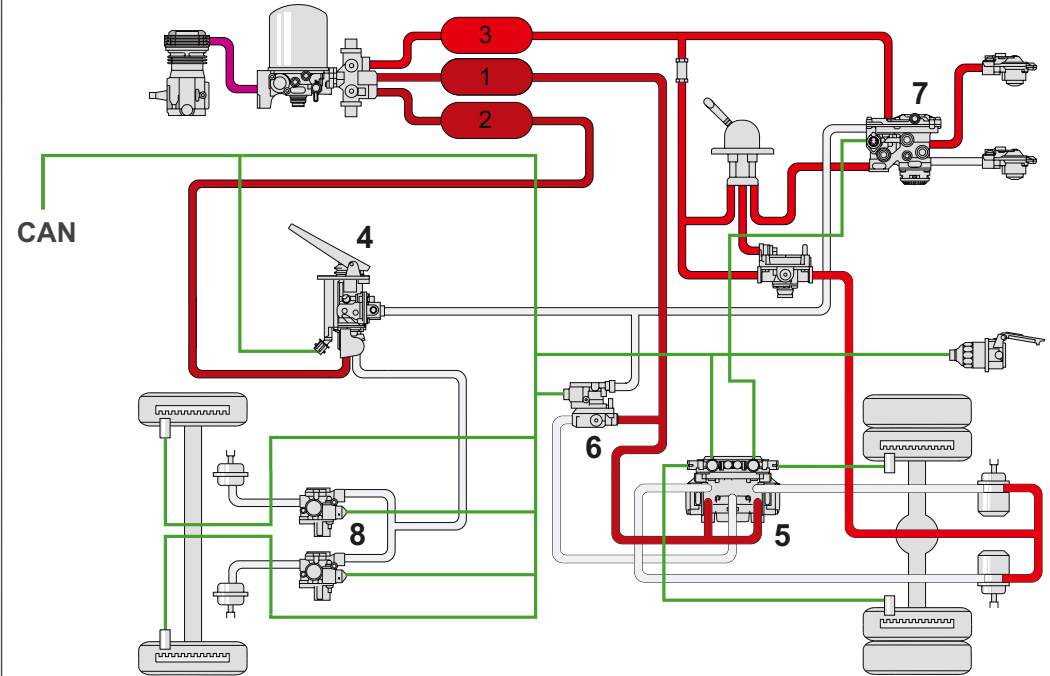


4

**Central Brake Unit (CBU)**  
480 020 ... 0



**EBS Evolution**



**EBS Compact**



5

**Axle Modulator**  
480 104 ... 0



6

**Redundancy Valve**  
480 205 10 . 0



7

**Trailer Control Valve**  
480 204 002 0



8

**ABS-Solenoid Control Valve**  
472 195 0 . . 0

© 2006 American Standard. All rights reserved.  
615 010 122 3 / 03.06

**EBS Truck - 2<sup>nd</sup> Generation**

**WABCO**